

FLOOR PLAN - BUILDING "7"
DORSEY VILLAGE CONDOMINIUMS
DEVELOPER:
DORSEY VILLAGE LLC
14407 WILLOW GROVE CIRCLE
LOUISVILLE, KENTUCKY 40245
PHONE: (502) 551-0569

LD&D
LAND DESIGN & DEVELOPMENT, INC.
ENGINEERING - LAND SURVEYING - LANDSCAPE ARCHITECTURE
204 WINDYBUSH AVENUE, SUITE 100, LOUISVILLE, KENTUCKY 40222
PHONE: (502) 422-9974 FAX: (502) 422-9975

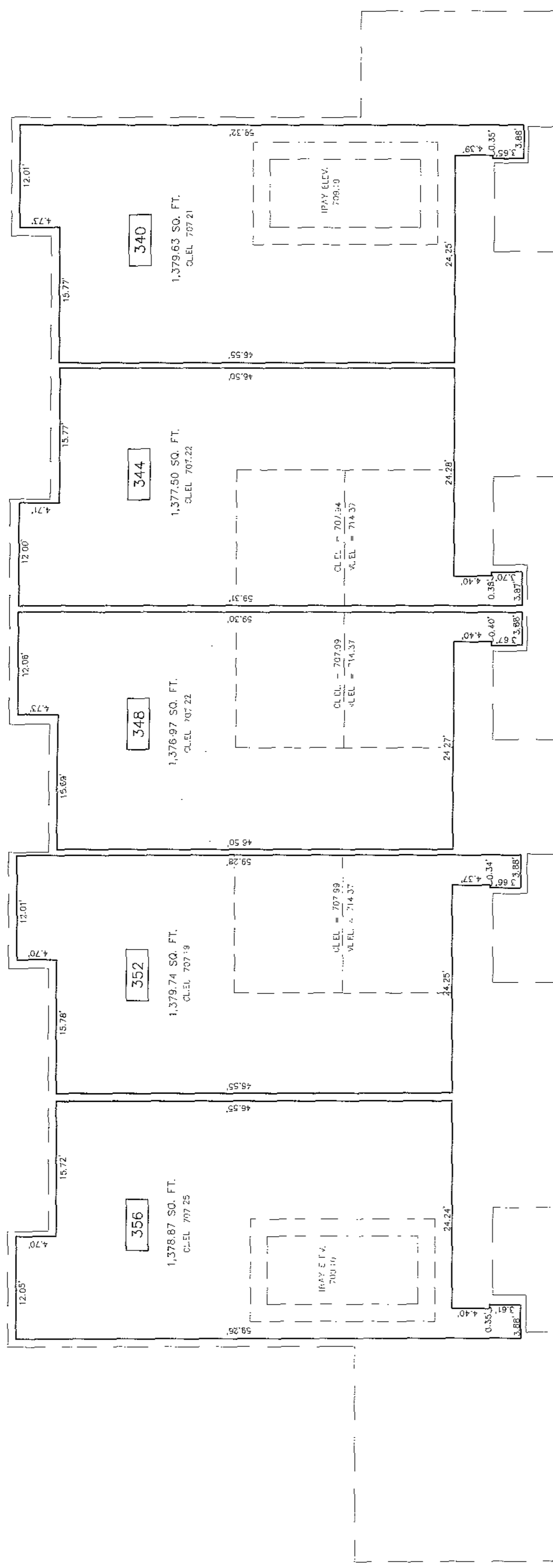
PROJECT DATA
DATE: MAY. 08, 2008
SCALE: 1/8" = 1'-0"
CHECKED BY: P.M.
DRAWN BY: P.M.

ENGINEER'S SEAL
SURVEYOR'S SEAL

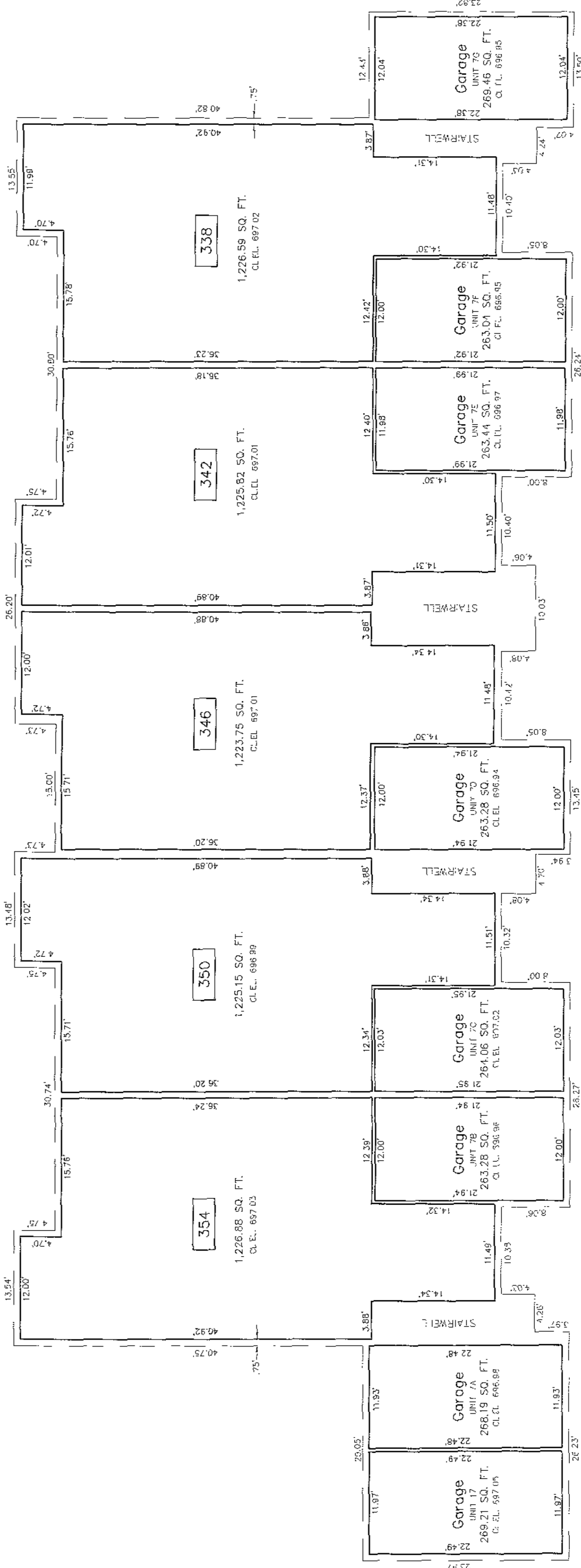
NO.	DATE	DESCRIPTION	BY

Recorded in County Book
No. 175 Page 175
Part No. 175
Document No. 3
Recorded in County Book
No. 175 Page 175
Part No. 175
County Clerk: JAMES HULLGEM-LEFT TO BE
County Clerk: JAMES HULLGEM-LEFT TO BE

**SECOND FLOOR
BUILDING "7"**
FINISH FLOOR ELEV. = 698.08



**FIRST FLOOR
BUILDING "7"**
FINISH GARAGE ELEV. = 687.82



LEGEND
[] - UNIT NUMBER
C. EL. - CEILING ELEVATION
--- - LIMITS OF OWNERSHIP
--- - LIMITS OF COMMON SPACE (BUILDING EXTERIOR)

175x3

175x3

175x3